



MARINA BAY SANDS



CARDBOARD
SUPERHEROES

ARCHITECTURE
& DESIGN
CURRICULUM

KU THE UNIVERSITY OF
KANSAS
School of
Architecture & Design



Contact Us

www.cardboardsuperheroes.com

info@cardboardsuperheroes.com

[@cardboardsuperheroes](https://twitter.com/cardboardsuperheroes)

WELCOME!



Bauer Lee

Cardboard Superheroes
FOUNDER

bauer@cardboardsuperheroes.com

Cardboard Superheroes is a non-profit organization with a mission to promote creative thinking and learning through immersive and engaging experiences to inspire the next generation of innovators.

We are a STEAM driven organization pushing the boundaries of education by designing exhibitions, workshops, tutorials, academic resources, and more! The creators also built life-sized cardboard models such as Iron Man, C-3PO, Groot, Wall-E, Black Manta, Hulkbuster, and more!



CARDBOARD
SUPERHEROES



KU THE UNIVERSITY OF
KANSAS

Cardboard Superheroes has partnered with The University of Kansas to bring you the Architecture & Design curriculum.

This curriculum will teach you to build cardboard architectural buildings ranging from the Empire State Building, Sydney Opera House, Louvre Museum, Eiffel Tower, and more. Through these models, students will learn a variety of design techniques to perfect their craft and introduce them to the world of architecture.

Be sure to check us out on Instagram for updates and new projects!
@cardboardsuperheroes and **@universityofkansas**

Marina Bay Sands

HISTORY



Fun Facts!

- It is the world's most expensive standalone casino property
- The Marina Bay Sands has an infinity pool on the roof
- It is one of the top 40 largest hotels in the world
- The design of Marina Bay Sands was inspired by a deck of cards

INSTRUCTIONS

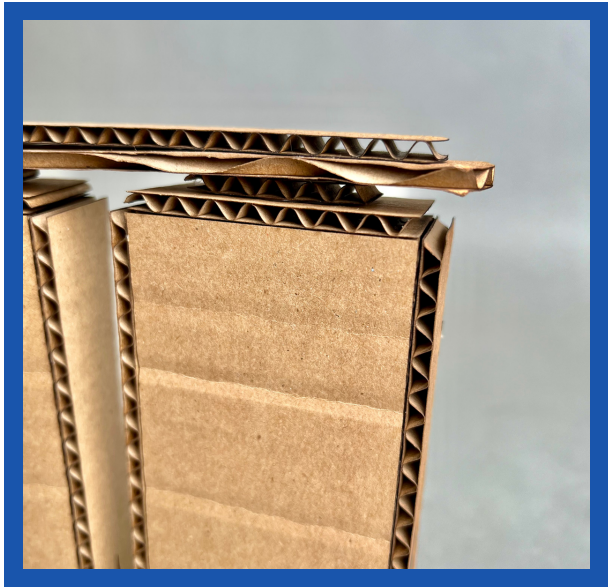
What's included in this curriculum:

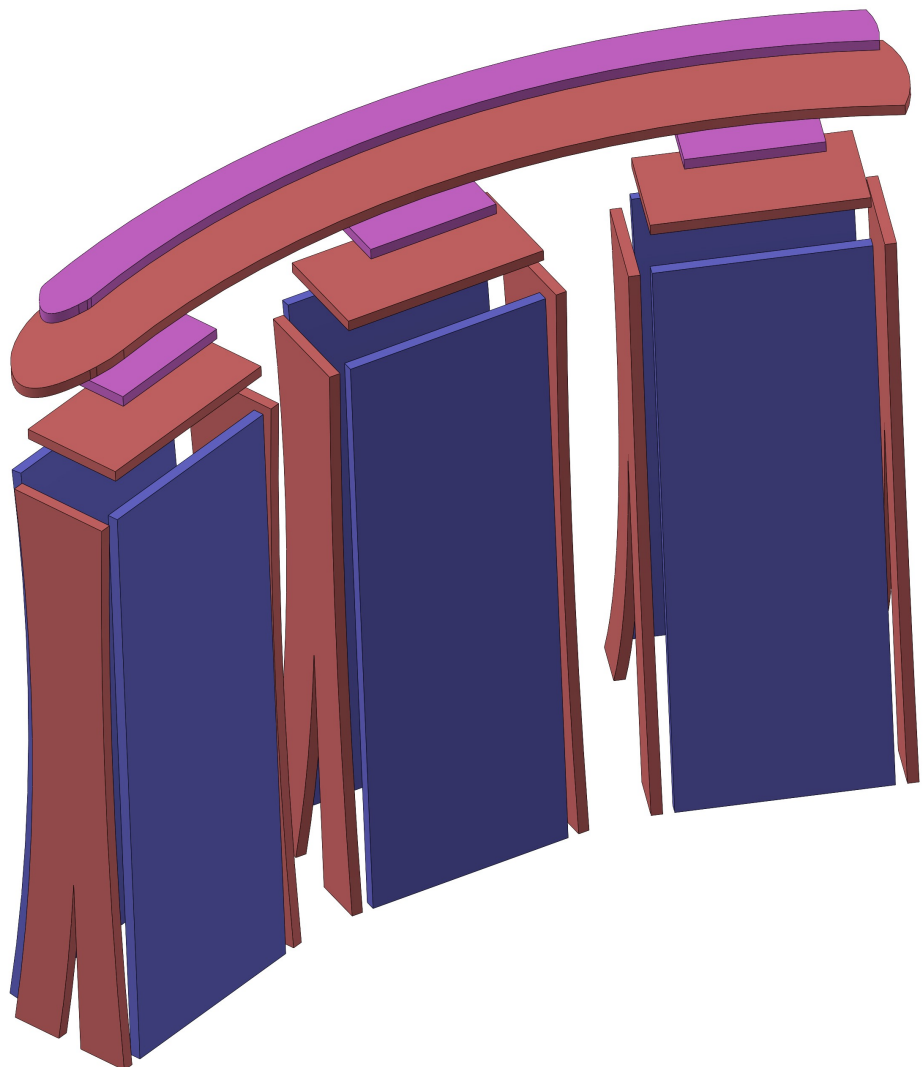
- Reference images (pg 4)
- 3D exploded view (pg 5)
- Paper cut-out template

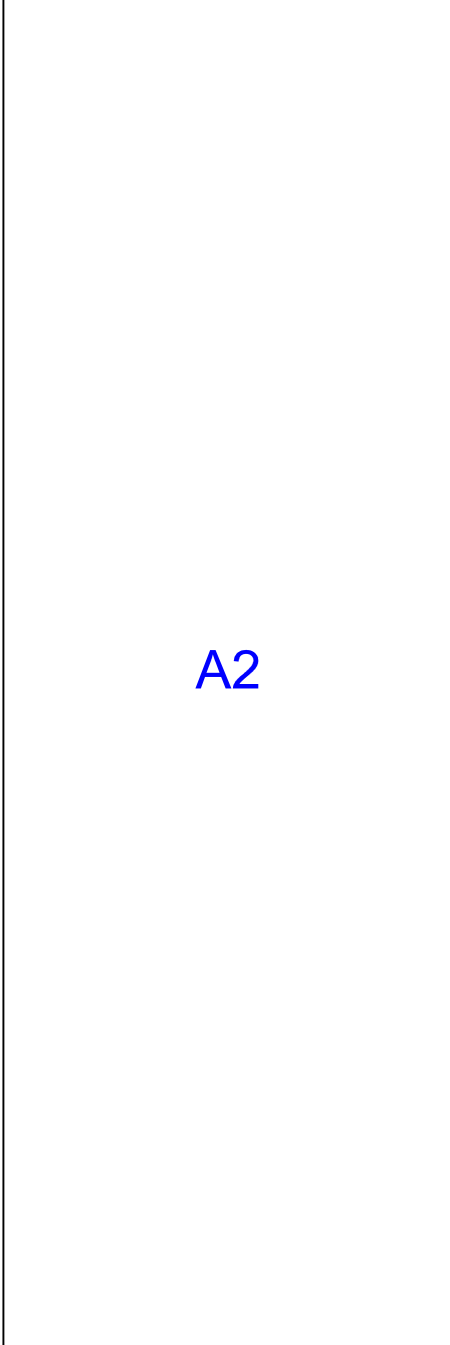
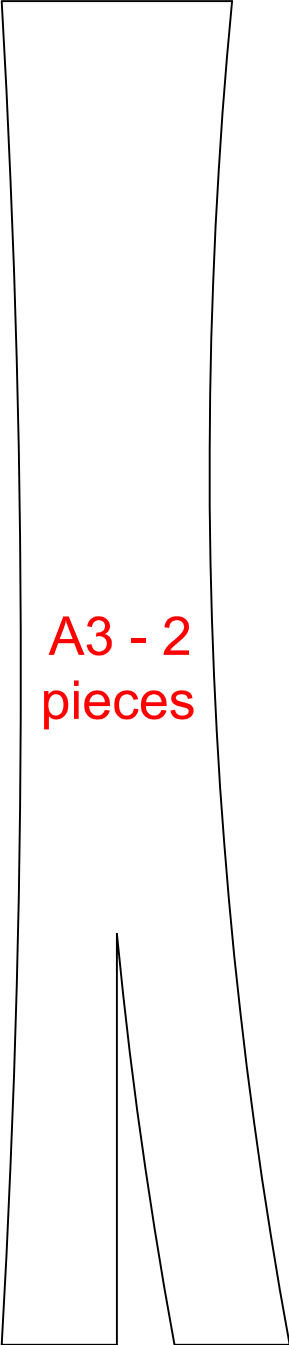
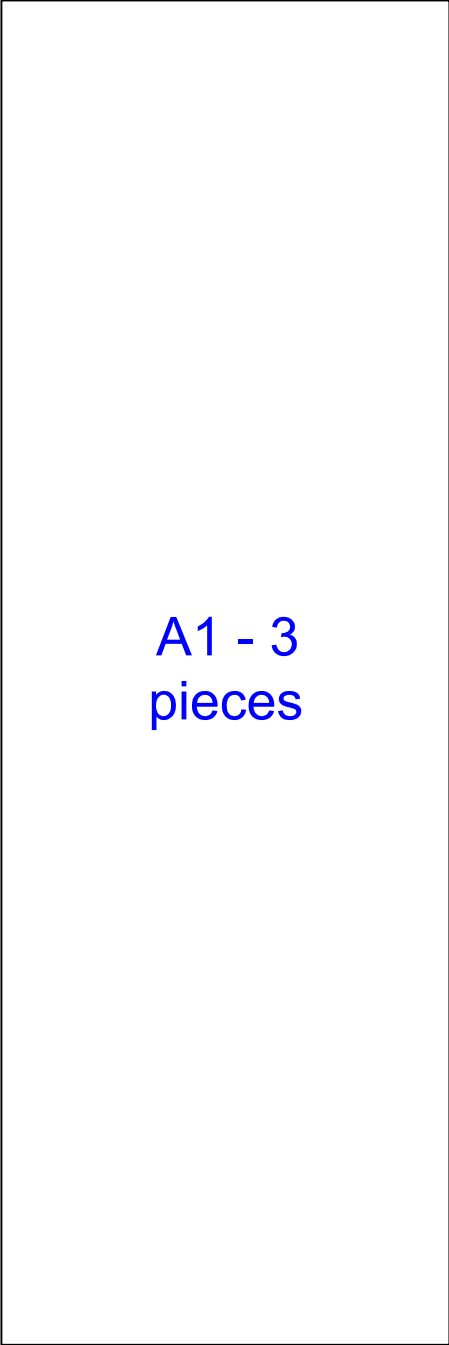
For supplies, you will need to gather the following materials:

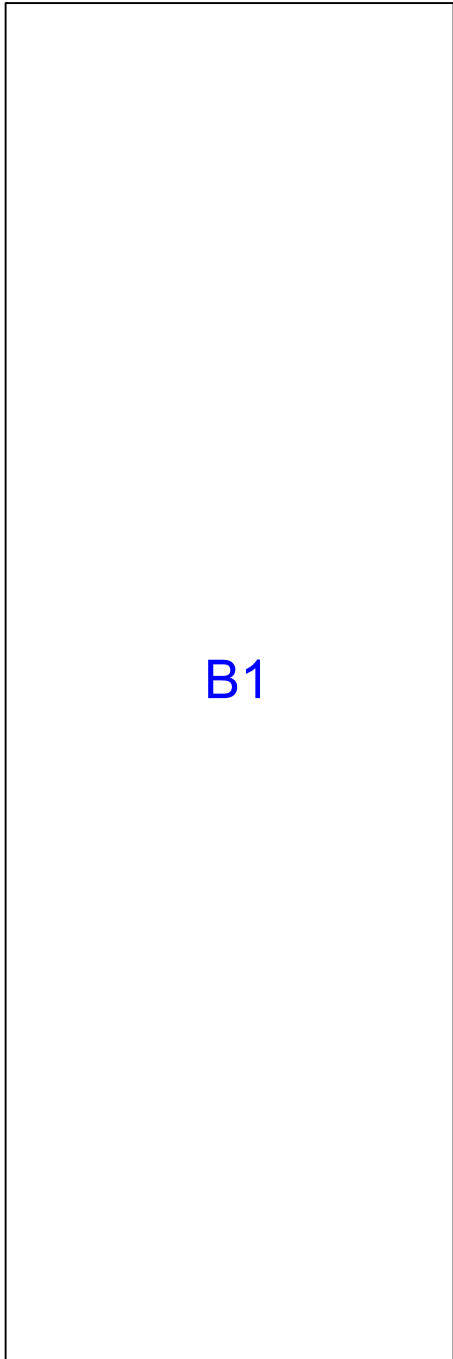
- Cardboard (i.e. Amazon boxes)
- Hot glue gun/sticks
- Scissors (i.e. Kitchen Aid)
- Single sided tape

Use the references images and 3D exploded view of the architectural building to help guide you through the creation of your model

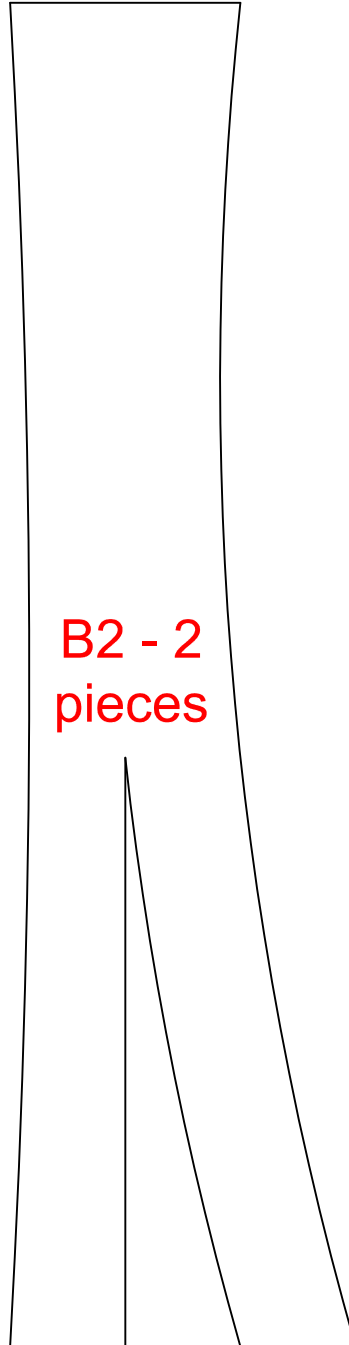




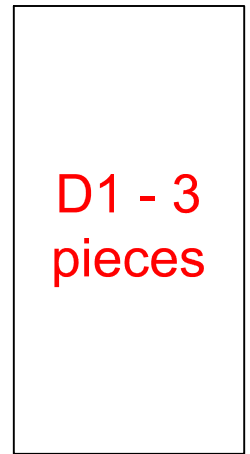




B1

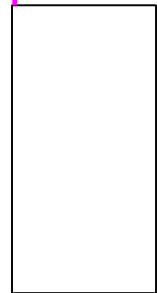


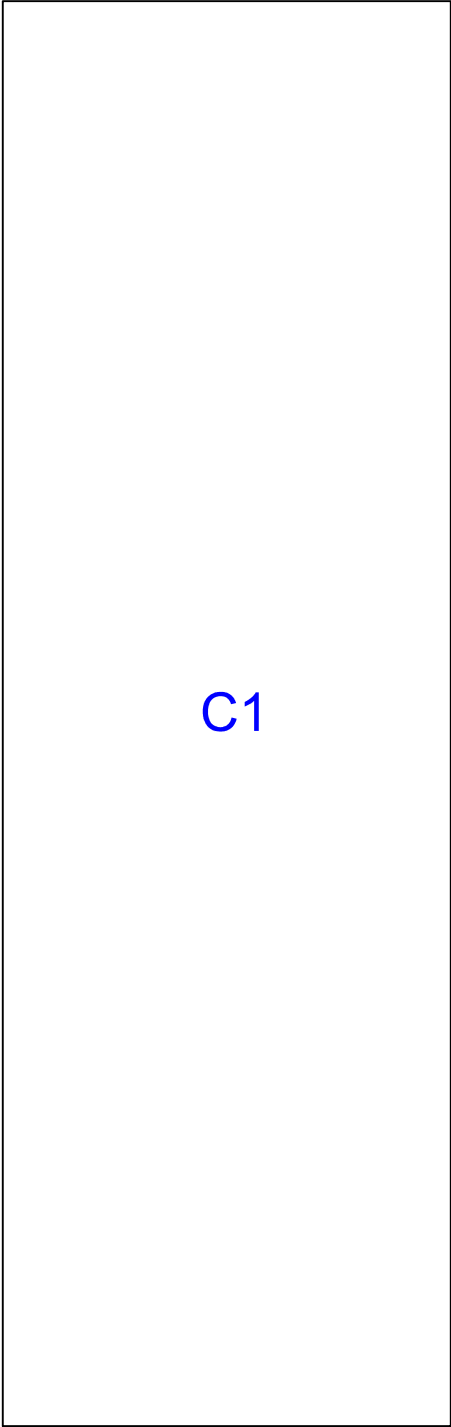
B2 - 2
pieces



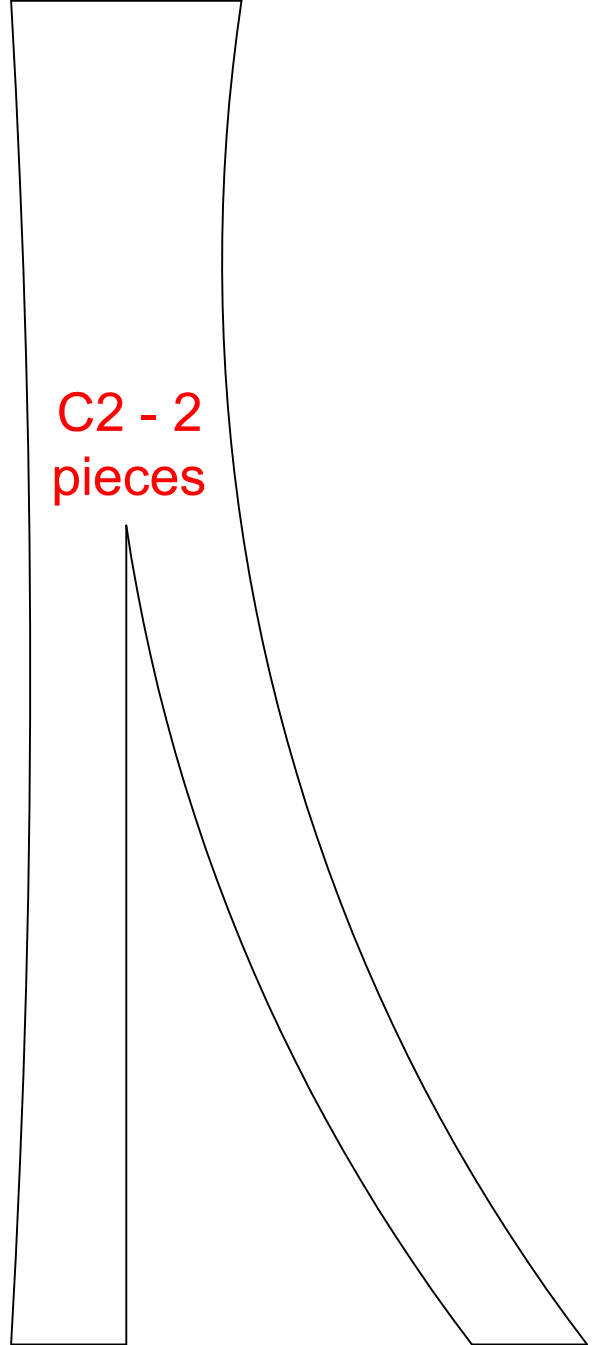
D1 - 3
pieces

D2 - 3
pieces





C1



C2 - 2
pieces

